

## HAKKOFT-801 ESD SAFE

### Thermal Wire Stripper

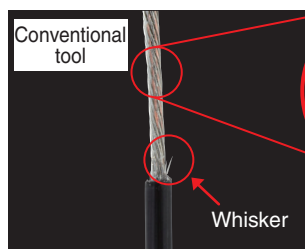
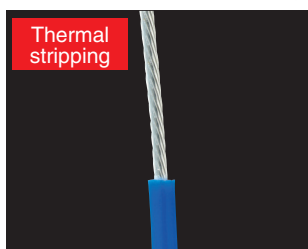
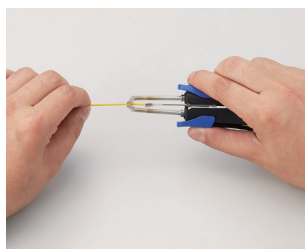
Blade not included



- Thermal wire stripper that ensures clean-cut removal of wire insulation
- High stripping performance ensures clean cut through highly heat-resistant PTFE.

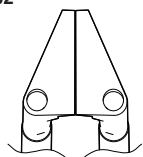
### Features

Solves the problem of whiskers and scratches being left by conventional tools

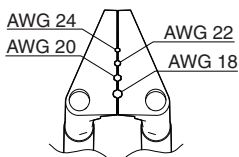


### Replacement Blades

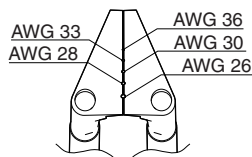
For FT-8002



G2-1601 Wire stripper blade  
Straight

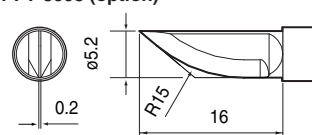


G2-1602 Wire stripper blade  
AWG 18 to 24



G2-1603 Wire stripper blade  
AWG 26 to 36

For FT-8003 (option)



G3-1601 Knife type blade

### Packing List

FT-801	Station, Handpiece (FT-8002), Power cord, Handpiece holder, Connecting cable, Lead adjuster, Blade removal tool, Instruction manual
--------	---

### Option

Part No.	Name	Specifications
FT8003-01	FT-8003 conversion kit	Handpiece (FT-8003), Knife blade, Handpiece holder, Instruction manual



Blade included



### Specifications

Model No.	FT-801
Power consumption	68 W/ 50 W*
<b>Station</b>	
Output voltage	AC 24 V
Dimensions	80 (W) × 130 (H) × 131 (D) mm
Weight**	1.2 kg
<b>Handpiece</b>	
Power consumption	64 W (24 V)
Cord length	1.3 m
Total length***	96 mm
Weight***	48 g

\* When connecting with FT-8003

\*\* Without cord

\*\*\* Without cord and blade

## HAKKO FT-710 ESD SAFE TIP CLEANER

### Solder-Splash-Preventing Rotary Tip Cleaner



- The solder removal level can be adjusted using two different types of brushes.
- Brushes can be replaced without using any tools, and safe design prevents solder waste from entering the drive part.

#### Features

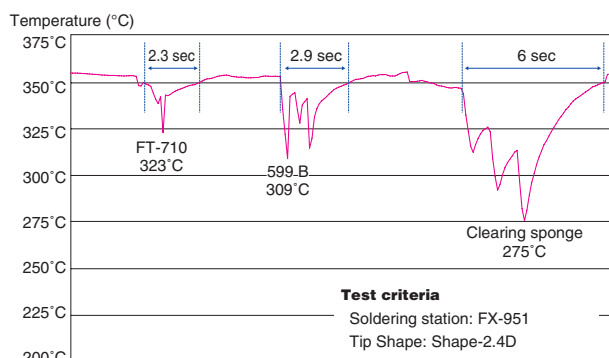
##### Solder-Splash prevention



##### Controllable solder removal level

Brush	Cleaning brush A (standard accessory)	Cleaning brush B (optional)
Material	Resin	Metal
Image after cleaning	Some solder remains.	Solder is completely removed.
Benefit	Prevents tip oxidation and extends the service life of the tip	Suitable for soldering small sections that require control over the amount of solder.

##### Minimizes decrease in temperature of the tip during cleaning



#### Packing List

FT-710	Unit, AC adapter, Receptacle A, Receptacle B, Lock nut, Gauge, Instruction manual
--------	---

#### Specifications

Model No.	FT-710
Rating	DC 24 V 130 mA
Brush rotational speed	2500 rpm
Standard receptacle	Receptacle A and B
Dimensions	71 (W) × 77 (H) × 107 (D) mm
Weight	450 g

##### AC adapter

Output voltage	DC 24 V
----------------	---------

##### Compatibility table

Tip	Receptacle A	Receptacle B	Receptacle C
T15, T11	✓		
T18, 900M		✓	
T20, T17, T22			✓

\* This cleaner cannot be used with T15-JL02, quad type, tunnel type, and spatula type soldering tips of T15 series.

\* It can be used with T19 series, only with the use of a custom-ordered receptacle. In this situation, consult your nearest HAKKO dealer or distributor.

\* It cannot be used with FX-8802 and FX-8803 with T18 series.

\* There are some tips with dimensions that cannot be adjusted with the standard receptacles. In this situation, consult your nearest HAKKO dealer or distributor.

#### Option

Part No.	Name	Specifications
A1567	Cleaning brush B	Metal brushes, set of 2
B3519	Receptacle C	—

# HAKO FT-700

TIP POLISHER

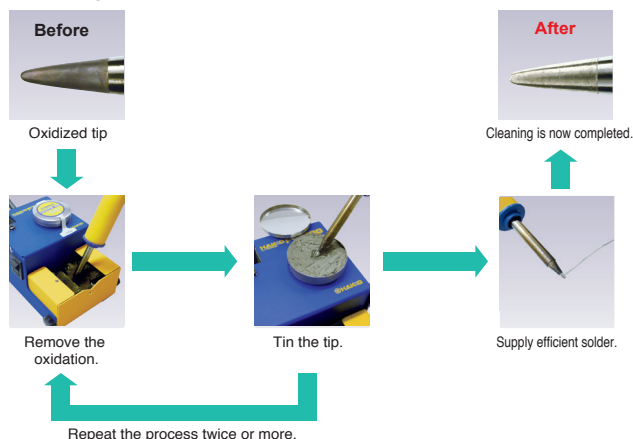
## Tip Polisher



- Soldering tip polisher best suited to the removal of oxidation on soldering tips
- Prevents the shortening of the service life of tips caused by oxidation

## Usage

### Cleaning procedure



\* Approximately 350°C is the most suitable temperature for cleaning the tips.



Use the brush to remove tough oxide.

## Packing List

FT-700	Unit, Paste, Brush, Instruction manual
--------	--

## Specifications

Model No.	FT-700
Power consumption	4.5 W
Dimensions	70 (W) × 54 (H) × 101 (D) mm
Weight*	0.65 kg

\* Without cord

### Chemical paste

Amount	10 g
Ingredients	Flux, tin (Sn) 50 wt% (each)

\* The flux component of chemical paste consists of alicyclic amine hydrobromate, aliphatic amine hydrobromate, petrolatum, and wax.

\* Make sure the tip is cleaned after use according to the procedure shown in the left.

\* Do not use the chemical paste for purpose other than restoring of the soldering tip.

# HAKO FS-100

CHEMICAL PASTE

## Chemical Paste



- Chemical paste best suited to the removal of oxidation on soldering iron tips
- Also used for retinning of soldering tips

## Packing List

FS-100	Paste, Instruction manual
--------	---------------------------

## Specifications

### Chemical paste

Amount	10 g
Ingredients	Flux, tin (Sn) 50 wt% (each)

\* The flux component of chemical paste consists of alicyclic amine hydrobromate, aliphatic amine hydrobromate, petrolatum, and wax.

\* Make sure the tip is cleaned after use according to the procedure shown above.

\* Do not use the chemical paste for purpose other than restoring of the soldering tip.

## HAKKO 373 ESD SAFE SELF FEEDER

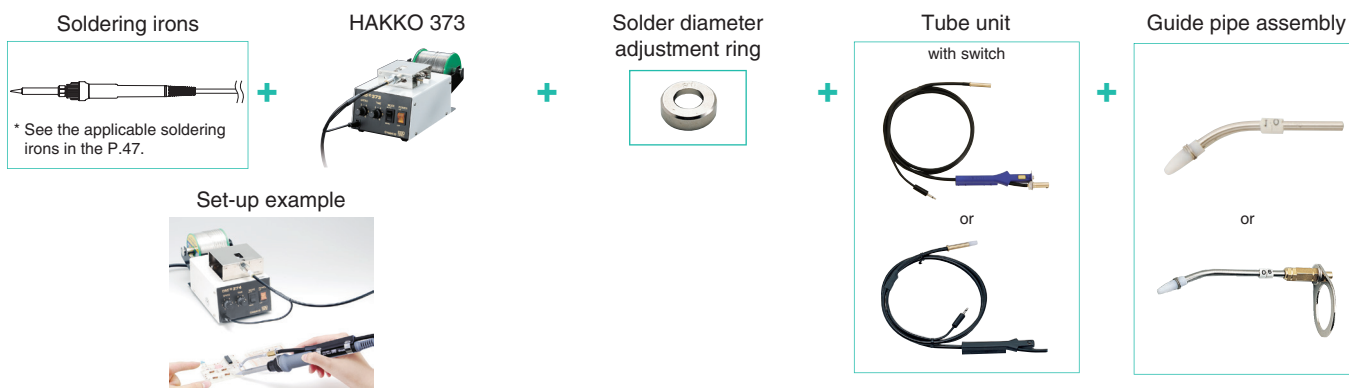
### Self Feeder



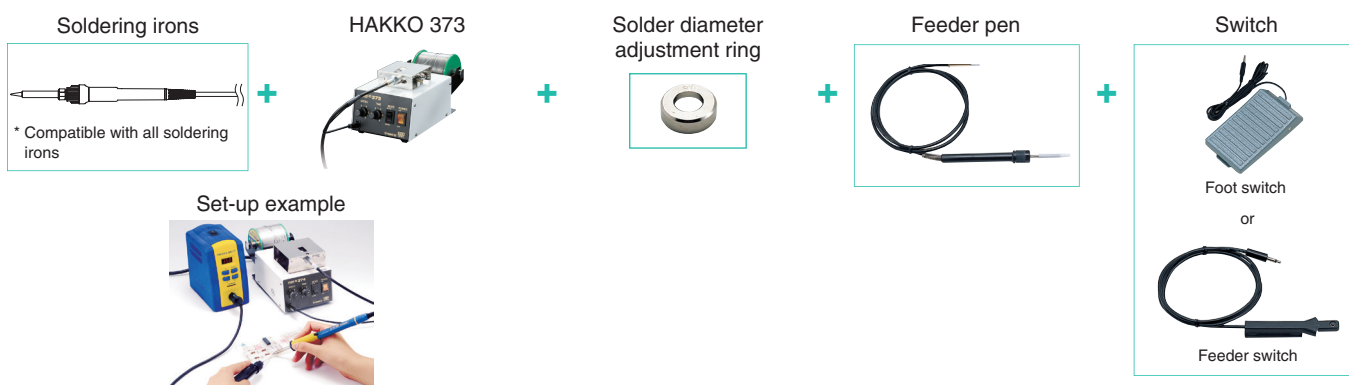
- Automatic solder feeder that enables a user to complete soldering work with just one hand
- The solder feed time and speed can be set.

### Set-Up Example

#### •Soldering for one-handed operation



#### •Soldering with a feeder pen



### Specifications

Model No.	373
Power consumption	6 W
Solder feed time	0 to 7 sec. (auto mode)
Solder feed speed	4.5 to 26 mm/sec.
Solder feed quantity	0 to 182 mm
Solder return quantity	0 to 5 mm (fixed speed)
Mode	Auto and manual
Usable solder diameter*	ø0.6, 0.65, 0.8, 1, 1.2, 1.6 mm
Usable solder quantity	1 kg or less
Dimensions	107 (W) × 110 (H) × 215 (D) mm
Weight**	1.5 kg

\* ø1.6 mm lead free solder can't be used.

\*\* With cord

### Packing List

373	Unit, Instruction manual
-----	--------------------------

The accessories that are required for initial set-up, such as a tube unit, guide pipe assembly, and solder diameter adjustment ring, are not included. They must be ordered separately and adapted to use with the soldering iron and solder wire diameter.



## Accessory Selection Guide

### ■ One-handed operation

Applicable soldering iron	Solder feed unit	Solder diameter	Options		
			Solder diameter adjustment ring 	Guide pipe assembly  or 	Tube unit  or 
FM-2027 FM-2028 	373	0.6, 0.65 mm	B1626	B3481	B3477
		0.8 mm	B1627	B3482	
		1 mm	B1628	B3483	
		1.2 mm	B1629	B3484	B3478
FM-2030 	373	0.6, 0.65 mm	B1626	B3726	B3477
		0.8 mm	B1627	B3727	
		1 mm	B1628	B3728	
		1.2 mm	B1629	B3729	B3478
FX-8002 	373	0.6, 0.65mm	B1626	B5072	B3477
		0.8mm	B1627	B5073	
		1mm	B1628	B5074	
		1.2mm	B1629	B5075	B3478
FX-8301 	373	0.6, 0.65 mm	B1626	B3566	B3563
		0.8 mm	B1627	B3567	
		1 mm	B1628	B3568	
		1.2 mm	B1629	B3569	B3564
		1.6 mm	B1630	B3570	
FX-8801 	373	0.6, 0.65 mm	B1626	B2146	B2143
		0.8 mm	B1627	B2147	
		1 mm	B1628	B2148	
		1.2 mm	B1629	B2149	B2144
		1.6 mm	B1630	B2150	
FX-8805 	373	0.6, 0.65 mm	B1626	B2151	B2143
		0.8 mm	B1627	B2152	
		1 mm	B1628	B2153	
		1.2 mm	B1629	B2154	B2144
		1.6 mm	B1630	B2155	

### ■ Feeder pen

Applicable soldering iron	Solder feed unit	Solder diameter	Options		
			Solder diameter adjustment ring 	Feeder pen 	Switch  or 
Compatible with all soldering irons	373	0.6, 0.65 mm	B1626	C1234	B2124 feeder switch or B1649 foot switch
		0.8 mm	B1627		
		1 mm	B1628		
		1.2 mm	B1629	C1235	
		1.6 mm	B1630		

## HAKKO 375 SELF FEEDER

### V-Groove Maker



- Cutting a V-groove put on the solder surface reduces the splash of solder and flux.
- The solder feed amount can be controlled by turning the switch on and off.
- Compact, space-saving automatic solder feeder

### Features

#### Minimize solder and flux splash

Cutting a V-groove on the solder surface enables the release of gas pressure generated by the flux, thereby suppressing splash. HAKKO 375 can cut a groove in only the solder needed, then helps to reduce the level of defectiveness.

#### Advantages of V-grooved solder

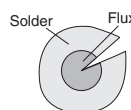
##### -Examination of solder and flux splash

#### Test criteria

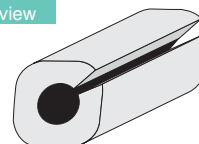
Measurement method	Measure the amount of solder and flux splashing after solder is fed to the soldering iron
Temperature setting for soldering iron	350°C and 400°C
Solder	Lead-free (Sn-3Ag-0.5Cu) Halogen-free flux ø0.3 mm and ø1 mm
Solder feed length	50 mm

\* The effect of solder and flux splashing prevention may differ under different operation conditions.

Solder cross-section view

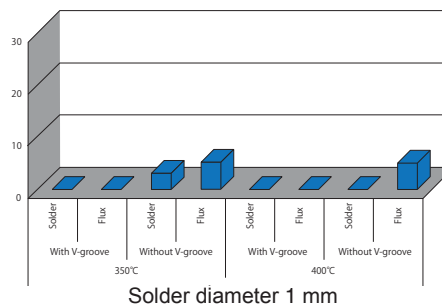
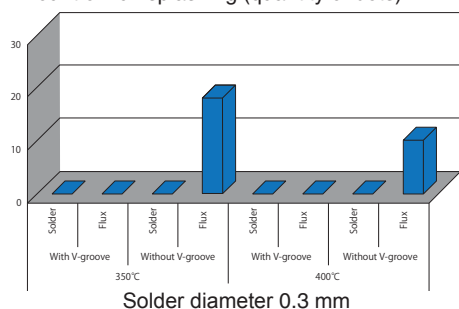


3D view



V-grooved solder

#### ■ Amount of flux splashing (quantity of dots)



### Packing List

375	Unit, AC Adapter, Instruction manual
-----	--------------------------------------

### Option

Part No.	Name
B1649	Foot switch
B2763	Hand switch

### Specifications

Model No.	375
Rating	DC 24 V 75 mA
Solder feed speed	27 mm/sec.
Usable solder diameter	ø0.3, 0.5, 0.6, 0.8, 1 mm
Dimensions	78 (W) × 98 (H) × 56 (D) mm
Weight	0.59 kg

#### AC Adapter

Output voltage	DC 24 V
----------------	---------

## HAKKO CUTTING TOOL

### Cutting Tool

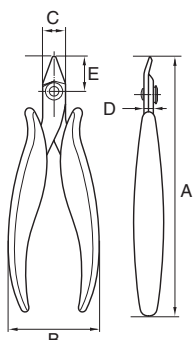


- Designed for precision assembly of delicate, complex electronic work
- Soft-touch grip enables long tool usage for long periods at a time.
- Recommend for use in cutting copper and soft lead wires

#### Specifications

Part No.	Name	Max. copper wire cutting capability	A	B	C	D	E
106-01	Cutting tool for flush cut with safety clip	1.3 mm	132	54	13.5	5	20
106-02	Cutting tool for flush cut with angled blade	1.3 mm	129	54	13.5	5	16
106-03	Cutting tool for flush cut with small blade	0.8 mm	130	54	9.5	4	18
106-04	Cutting tool for a front, flush cut	1 mm	138	54	14	6	27
106-05	Cutting tool for flush cut	1.3 mm	132	54	13.5	5	20
106-06	Short nose pliers	—	140	54	13	6	29
106-07	Long nose pliers	—	154	54	13	6	40
106-08	Bent nose pliers	—	146	54	13	4	35

(Unit: mm)

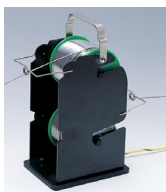


## HAKKO 611 ESD SAFE SOLDER REEL STAND

### Reel Stand



- Solder reel stand for coiled solder with a maximum load of 1 kg
- Smooth action when reeling out solder wire improves work efficiency
- A mounting screw for the grounding wire is attached on the baseplate.



No.611-2

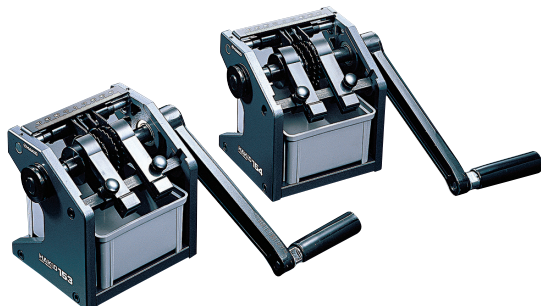
#### Specifications

Part No.	611-1	611-2
Shaft diameter	ø15 mm	
Usable solder	Roll solder 1 kg (max.) × 1	Roll solder 1 kg (max.) × 2
Dimensions	86 (W) × 78 (H) × 141 (D) mm	87 (W) × 200 (H) × 141 (D) mm
Weight	450 g	750 g

## HAKKO 153·154

LEAD FORMER

### Lead Cutter and Former



- Lead cutter and former for axial components
- Can be used for forming and cutting, forming only, or cutting only

### Cutting and Forming

HAKKO 153	HAKKO 154
<p>Cutting and forming</p>	<p>Cutting and forming</p>
<p>Forming</p>	<p>Forming</p>
<p>Cutting</p>	<p>Cutting</p>

### Packing List

153, 154	Unit, Parts tray, Clamp, Handle, 2 mm Hexagon wrench, 2.5 mm Hexagon wrench, 3 mm Hexagon wrench, 4 mm Hexagon wrench, Instruction manual
----------	---

### Specifications

Part No.	153-1	154-1
Forming size	5.6 mm pitch	5 mm pitch
Max. diameter of lead wire	ø0.8 mm (max.)	ø0.5 mm (max.)
Lead wire*	For annealed copper lead wire only	
Outer width of tape	85 mm (max.)	
Taping pitch	5 mm	
Dimensions	125 (W) × 130 (H) × 110 (D) mm	
Weight**	2 kg	

\* These tools are not suited to work on components with lead frames (square lead).

\*\* Including handle and clamp

## HAKKO 155

LEAD CUTTER

### Lead Cutter



- Lead cutter for radial components

### Packing List

155	Unit, Parts tray, Clamp, Handle, 2 mm Hexagon wrench, 2.5 mm Hexagon wrench, 3 mm Hexagon wrench, 4 mm Hexagon wrench, Instruction manual
-----	---

### Specifications

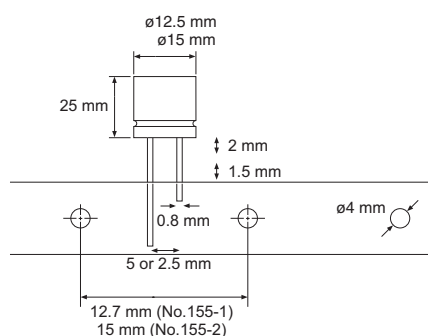
Part No.	155-1	155-2
Max. diameter of lead wire	ø0.8 mm (max.)	
Lead wire*	For annealed copper lead wire only	
Max. processing part size	ø12.5 × 25 mm (max.)	ø15 × 25 mm (max.)
Feed hole pitch	12.7 mm	15 mm
Lead pitch**	5 mm, 2.5 mm	5 mm
Min. processing size	1.5 mm from taping end, 2 mm from component end	
Dimensions	110 (W) × 140 (H) × 125 (D) mm	
Weight***	1.7 kg	

\* These tools are not suited to work on components with lead frames (square lead).

\*\* When shipped, the unit is set for components with a lead pitch of 5 mm.

\*\*\* Including handle and clamp

### Cutting



\* Cutting only

# HAJKO DIPLINER

LEAD STRAIGHTENER

## Lead Straightener



- IC lead liner for correcting variable lead pitches
- Simple mechanism enables the adjustments with just one screw.
- Simply insert the IC case into the chute.

### Packing List

FT100, FT150,  
FT200, FT300

Unit, Instruction manual

### Specifications

Part No.	FT100	FT150	FT200	FT300
Width of IC	7.5 mm	10 mm	15 mm	19 mm
Number of IC leads	8, 14, 16 18, 20	22	24, 28 40, 42	64



## **HA-KO 393** VACUUM PICK-UP

### Dropper Type



- Portable, easy-to-carry manual dropper-type vacuum pick-up
- Maximum pick-up capacity of 40 gf
- Uses antistatic material

## **HA-KO 394** VACUUM PICK-UP

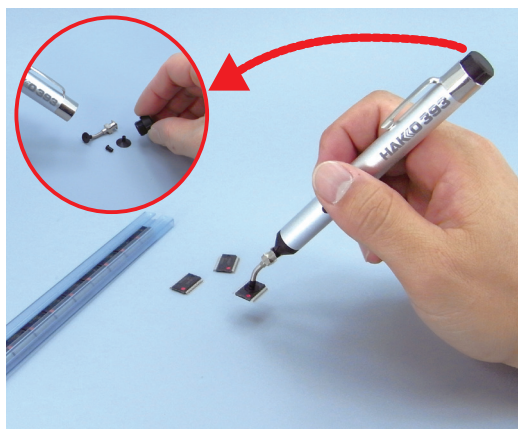
### Battery-Powered Type



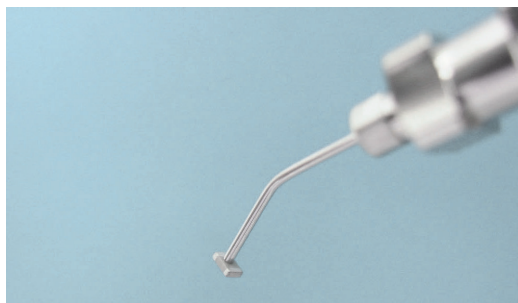
- Battery-powered suction pick-up tool with built-in vacuum pump
- Maximum pick-up capacity of 120 gf
- Uses antistatic material

## Usage Example

### HAKKO 393



### HAKKO 394



With the bent nozzle accessory, 0603-size components can be picked up.



## Replacement Pads and Nozzles

Part No.	Name	Specifications
A1164	Bent nozzle	0.4 mm
A1165	Bent nozzle	1.1 mm with stopper
A1198	Bent nozzle	0.26 mm
A1486	Straight nozzle	1.1 mm with stopper
A1166	Pad	3 mm
A1312	Pad	5 mm
A1167	Pad	7 mm
A1311	Pad	10 mm

## Packing List

<b>393</b>	Unit, 1.1 mm diameter Bent nozzle with stopper, 3 mm diameter Pad, 7 mm diameter Pad, 10 mm diameter Pad, Instruction manual
<b>394</b>	Unit, 1.1 mm diameter Bent nozzle with stopper, 5 mm diameter Pad, 10 mm diameter Pad, two AAA Alkaline batteries (for trial), Instruction manual

## Specifications

Model No.	393
Pad	Conductive silicone rubber
Dimensions	ø13 mm × 132 mm
Weight*	19 g

\* Without nozzle and pad

Model No.	394
Power supply	Two AAA batteries
Pad	Conductive silicone rubber
Battery life	Approx. 30,000 suction cycles (with alkaline batteries)
Suction capacity	120 gf (with a pad diameter of 10 mm)
Dimensions	130 (W) × 29 (H) × 22 (D) mm
Weight*	43 g

\* Without batteries, nozzle and pad

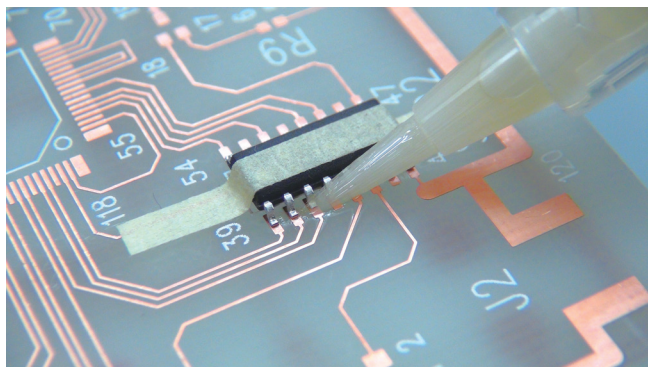
## HAKO FS-210 SOLDERING FLUX

### Brush-tip Type Flux Pen



#### Features

Pen for pinpoint application of optimum amount of flux



Simply push the shaft for a generous coating of flux



- Pen tip does not split easily.
- You can fill your favorite flux into FS-210.
- Simply push the pen shaft when you need some extra flux.

#### Packing List

<b>FS210-82</b>	Flux container for 4 mL (5 pcs)
-----------------	---------------------------------

\* No Flux contained.

#### Replacement Parts

<b>A5009</b>	Brush-tip with a cap (5 pcs)
--------------	------------------------------

